

High-layer filter container with a nozzle base "MÜNCHEN"

A guarantee for clean water and low operating costs. BEHNCKE filter containers. Made in Germany.

The high-layer filter series 'MÜNCHEN' is usable as a single- or multi-layer filter and as a granular activated carbon sorption filter. For installation situations with a very small footprint and low overall height. The MÜNCHEN container can also be used as a multi-layer filter in accordance with DIN 19643 Part 2, provided that the filter material grain sizes required in the standard are used. If the overall height is low, the MÜNCHEN filter can also be used as an activated carbon filter as a compromise to DIN 19643-5.

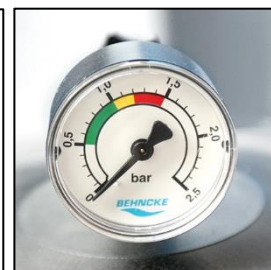
BEHNCKE filter operating technology - know-how for reduced energy and water consumption. For our future.

- High-quality glass-fibre reinforced polyester resin with inner sealing
- Large service openings at the top with a diameter of 220 and on the sides measuring 280/450
- Built-in nozzle base including nozzles
- 3/4" air bleed connection
- Raw filtrate connection in accordance with the standard
- Sight glass 150 x 50 mm
- Max. working temp. 40°C, working pressure 2.5 bar
- Connection of a 6-way backwash valve, Besgo valve or switch panel is possible (optional)
- Automatic ventilation and air bleed valves (optional)
- Differential pressure gauge (optional)



High-quality workmanship - the basis for long lasting and fault-free operation.

Rational equipment details, such as a differential pressure gauge station, facilitate the daily routine.



The built-in BEHNCKE nozzle base meets the highest quality requirements in accordance with the standards for public operation (in conformity with DIN 19643/19605).



High-layer filter container "MÜNCHEN" - Technical specifications

| | | | | | |
|-------------------------|----------------------|----------------------|----------------------|----------------------|--------------------|
| Inner diameter x height | 600 x 1800mm | 800 x 1800mm | 1000 x 1800mm | 1200 x 1800 mm | 1400 x 2035mm |
| Outer diameter | 630 mm | 840 mm | 1050 mm | 1260 mm | 1430 mm |
| Untreated/clean water | NB 80/50 | NB 80/65 | NB 125/100 | NB 125/125 | NB 150/125 |
| Filter area | 0.280 m ² | 0.500 m ² | 0.785 m ² | 1.131 m ² | 1.5 m ² |
| Weight (approx.) | 72 kg | 88 kg | 208 kg | 360 kg | 480 kg |

High-layer filter system "MÜNCHEN"



High-layer filter system "MÜNCHEN", optional with Besgo valve.

- Complete with a filter container made of glass-fibre reinforced polyester resin with inner sealing
- Large service openings at the top with a diameter of 220 and on the sides measuring 280/450
- Built-in nozzle base including nozzles
- 3" backwash valve on the 600 dia. + 800 dia. containers
- Switch panel NB 125 (on the 1000 + 1200 dia. containers) and front piping
- Connection sizes in accordance with DIN 19643
- Fully piped with a self-priming plastic filter pump (GS certified) and a large strainer mounted on a noise-absorbing plastic pallet, with a 150 x 50 sight glass
- Max. working temperature 40°C, working pressure 2.5 bar
- Automatic Besgo valve (optional)

High degree of user friendliness, e.g. generous service openings at the top and on the sides facilitate the essential maintenance tasks incurred and thus reduce the operating costs.



Multilayer filter system 'MÜNCHEN' - Technical specifications

| | | | | | |
|-----------------------------|--------|--------|--------|---------|---------|
| Single-layer container Ø mm | 600 | 800 | 1000 | 1200 | 1400 |
| Support layer 2,00-3,15, kg | 25 | 50 | 75 | 10 | 125 |
| Support layer 1,00-2,00, kg | 25 | 50 | 75 | 100 | 125 |
| Filter layer, kg | 175 | 300 | 500 | 700 | 975 |
| Hydro H 0,6-1,6, kg | 75 | 125 | 175 | 250 | 350 |
| Total, kg | 300 kg | 525 kg | 825 kg | 1150 kg | 1575 kg |

Single-layer filter system 'MÜNCHEN' - Technical specifications

| | | | | | |
|-----------------------------|-----|-----|------|------|------|
| Single-layer container Ø mm | 600 | 800 | 1000 | 1200 | 1400 |
| Grain size 0.4-0.8, kg | 250 | 475 | 700 | 1050 | 1500 |
| Grain size 0.7-1.2, kg | 125 | 200 | 365 | 450 | 750 |
| Total, kg | 375 | 675 | 1065 | 1500 | 2250 |

AFM (Activated Filter Material)

| | | | | | |
|-----------------------|-----|-----|------|------|------|
| Container, Ø mm | 600 | 800 | 1000 | 1200 | 1400 |
| Grade 1 (0.5-1.0), kg | 225 | 425 | 625 | 950 | 1155 |
| Grade 2 (1.0-2.0), kg | 75 | 150 | 300 | 325 | 588 |
| Total, kg | 300 | 575 | 925 | 1275 | 1743 |

Your authorized dealer

